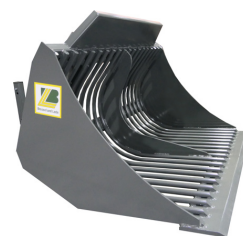




*The Stone basket is a strong tool for collecting stones or picking up cobble stones.
Smaller stones and dirt can be sifted out.*

Basic equipment**With cutting edge****Rear view****INFORMATION**

- Height of basket 800mm, Depth of basket 1050mm
- Mit 1 respectively 2 sickle reinforcements
- With spill guard
- Diameter of round steels: 30mm
- Distance between round steels: 60mm
- With roll back protection



STONE BASKET

for loader from 2 to 6tons lifting capacity

A PERFECT ATTACHMENT IN 3 STEPS ① + ② + ③ = 😊

① CHOOSE PRODUCT








Width	Volume	ca. theo.	Weight	Part-No.
1470 mm	550 l	0,71 m ³	330 kg	L50 BA-S4
1650 mm	580 l	0,76 m ³	360 kg	L50 BA-S5
1830 mm	650 l	0,86 m ³	400 kg	L50 BA-S6
2100 mm	750 l	1,00 m ³	450 kg	L50 BA-S7
2370 mm	820 l	1,10 m ³	480 kg	L50 BA-S8
2550 mm	900 l	1,20 m ³	510 kg	L50 BA-S9

② LOADER QUICK COUPLER (INDICATE BRAND & TYPE)

Euro-System	AF-M4
Frontloader without Euro-coupling system	NE-02
Front hydraulic cat. II	NE-18
Front hydraulic cat. III	NE-19
Wheel- or telescopic loader	NE-51

Please indicate **ALWAYS** manufacturer and type of the loader on inquiries or orders!

③ SPECIAL EQUIPMENT

 Color RAL 7043 - grey	FA-02
 Color RAL 9005 - black	FA-03
 Color RAL 2011 - orange	FA-05
 Color similar to AGCO grey	FA-11
 Color similar to Fendt nature green	FA-09
 Color similar to MF red	FA-10
 Color similar to John Deere green	FA-07
Free choice: Without roll-back guard	OZ-F2
With cutting edge 200x20mm, 500HB (without roll back guard) -per Meter	OZ-F3

😊 READY

Delivery FCA at factory Visselhövede (Transportcosts on request)