

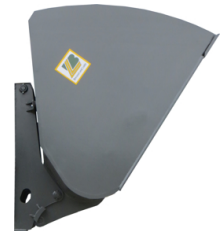


*Diese attachment is connected directly to the pallet fork carrier. The high volume series has a higher capacity and a more powerful tip function.*

**Special: Raised sideparts**



**Special: Raised sideparts, screwed knife**



**Special: Raised sideparts, screwed knife**



**INFORMATION**

- For fork lift trucks - connected to the pallet fork carrier  
ISO FEM III - (508mm height of pallet fork carrier) or ISO FEM IV - 635mm height of carrier)
- Bucket depth: 1450mm, height: 1060mm
- With high wear resistant substructure and cutting edge (200x20mm, 500HB)
- With reinforced body, cylinders and frame for heavy duty usage
- With 2 hydraulic cylinders
- Own gravity center [ESP] and gravity center of loading goods [LSP] please find in the chart

The width 1300mm can be used for loose materials with up to 1800kg/m<sup>3</sup> and wider buckets for goods with up to 1300kg/m<sup>3</sup>.

**Free selectable colors**

■ RAL 7043

■ RAL 9005

■ RAL 6011

■ RAL 2011



# HIGH VOLUME FORK TRUCK BUCKET

for fork truck with 3 to 6t lifting capacity

A PERFECT ATTACHMENT IN 3 STEPS ① + ② + ③ = 😊

## ① CHOOSE PRODUCT

Width	Volume	ca. theo.	ESP1 / ESP2	Weight	Part-No.
1300 mm	1200 l	1,42 m <sup>3</sup>	740 / 535 mm	700 kg	L35 BA-08
1600 mm	1475 l	1,76 m <sup>3</sup>	755 / 545 mm	760 kg	L35 BA-11
1800 mm	1660 l	2,00 m <sup>3</sup>	770 / 555 mm	805 kg	L35 BA-13
2000 mm	1840 l	2,21 m <sup>3</sup>	780 / 560 mm	845 kg	L35 BA-15
2300 mm	2120 l	2,55 m <sup>3</sup>	790 / 565 mm	910 kg	L35 BA-18
2500 mm	2300 l	2,77 m <sup>3</sup>	800 / 570 mm	950 kg	L35 BA-21

## ② CHOOSE TYPE OF FORK CARRIER

ISO FEM III	AF-1B
ISO FEM IV	NE-15

## ③ SPECIAL EQUIPMENT

High boron screwed knife (200x20mm, dbl. beveled, 500HB) per meter	S3-06
Bucket side parts with rounded edges	KS-01
Raised side and back part	SH-10
Quick connect locking	AP-01

## 😊 READY (ALL PRICES +7,5% SURCHARGE)

Delivery FCA at factory Visselhövede (Transportcosts on request)