

PRODUCT  
**L95-L96**



**YOUR ATTACHMENT SPECIALIST** - [www.bressel-lade.de](http://www.bressel-lade.de)  
Send us a mail to: [info@bressel-lade.de](mailto:info@bressel-lade.de)



The Bulky goods bucket is heavy duty designed for also heavy loading goods (wood brush, recycling material, waste, etc.). The removable sideparts allow the loading of very bulky goods like tree trunks.

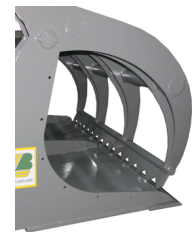
**Opened**



**With jagged edges in the grapple**



**With jagged edges in the grapple**



**INFORMATION**

- With 1 sickle reinforcement (from 2200mm width with 2)
- With removable sideparts (screwed)
- With 2 hydraulic cylinders and adjustable pressure limiting valve

**Type L [L95]**

- Highwear resistant cutting edge 150x20mm, 500HB with strong substructure
- Bucket depth 1000mm, height 800mm, opening width ca. 1400mm

**Type XL [L96]**

- Highwear resistant cutting edge 200x20mm, 500HB
- High wear resistant substructure
- Bucket depth 1100mm, height 900mm, opening width ca. 1550mm

**Free selectable colors**



RAL 7043



RAL 9005



RAL 6011



RAL 2011



# BUCKET FOR BULKY GOODS L/XL

for loader from 2 to 6,5tons lifting capacity

A PERFECT ATTACHMENT IN 3 STEPS ① + ② + ③ = 😊

## ① CHOOSE PRODUCT

Type / Width	Tines	Volume	Weight	Part-No.
L / 1600 mm / [L95]	4	1470 l	565 kg	L95 BA-11
L / 1800 mm / [L95]	4	1650 l	635 kg	L95 BA-13
L / 2000 mm / [L95]	4	1830 l	705 kg	L95 BA-15
L / 2200 mm / [L95]	5	2020 l	795 kg	L95 BA-17
L / 2400 mm / [L95]	5	2200 l	865 kg	L95 BA-19
L / 2600 mm / [L95]	5	2380 l	920 kg	L95 BA-22
XL / 2200 mm / [L96]	5	2530 l	1250 kg	L96 BA-17
XL / 2400 mm / [L96]	5	2760 l	1300 kg	L96 BA-19
XL / 2600 mm / [L96]	5	2990 l	1380 kg	L96 BA-22

## ② CHOOSE TYPE OF LOADER WITH QUICKCOUPLER

Euro-System	AF-M4
Frontloader without Euro-coupling system	NE-02
Wheelloader with Z-bar Kinematic	NE-59
All other wheel- or telescopic loader	NE-51

## ③ SPECIAL EQUIPMENT

Sticked gravel tines (per piece)	SZ-
Protection tube	SS-01
Model with jagged edge in grapple	OZ-61
Pressure holding valve (needed for Bobcat, Dieci, Merlo, MF, aso.)	DH-01
<b>Only for type L</b>	
High wear res. substruc. and cutting edge (200x20mm, 500HB) per m.	S2-03
High wear res. substruc. & screwed knife (dbl. beveled, 500HB) per m.	S2-06
<b>Only for type XL</b>	
Type XL - High boron screwed knife (250x25mm, dbl. beveled, 500HB) per m.	S3-05
Graveltine -sticked HD for 30mm knife (per piece)	SZ-s
Type XL - High wear res. screwed knife (dbl. beveled, 250x25mm, 500HB) per m.	S3-20

## 😊 READY

Delivery FCA at factory Visselhövede (Transportcosts on request)