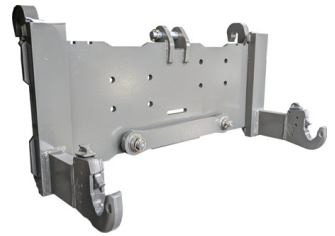




Attachments with 3-point linkage can be lifted and transported. The K80, K50 and towing latch allows handling of your trailers on your company yard.

**Scorion - Basic equipment****JCB Q-Fit - Full equipped****INFORMATION**

- High value cat. 3 quick coupling hooks
- With pull bar top link (not adjustable)
- Adjustable distance between hooks. (From 698 to 1040 mm middle-middle)
- Lifting capacity max. 4000 kg (on frontloaders of tractors: 2500 kg) by using of attached machines on the adapter frame is the max. allowed lifting capacity 2000kg. Distance of gravity center 500mm in front of the hooks. Stronger versions for example for wheel loaders to work with big silage forks are deliverable on request.



**- Several variants available quickly!**



# ADAPTERFRAME TO FRONT-/TAIL HYDRAULIC

for loader from 1 to 6tons lifting capacity

A PERFECT ATTACHMENT IN 3 STEPS ① + ② + ③ = 😊

## ① CHOOSE PRODUCT

Description	Lifting capacity	Weight	Part-No.
Adapter with 3-point hitch cat. 3	2000 kg	110 kg	A20 OZ-A9

## ② LOADER QUICK COUPLER (INDICATE BRAND & TYPE)

Euro-System	AF-M4
Frontloader without Euro-coupling system	NE-02
Front hydraulic cat. II	NE-18
Front hydraulic cat. III	NE-19
Courtloader	NE-41
Wheel- and telescopic loaders	NE-51
Excavator Lehnhoff MS01, MS03, MS08	NE-70
Please indicate ALWAYS manufacturer and type of the loader on inquiries or orders!	

## ③ SPECIAL EQUIPMENT

 Color RAL 7043 - grey	FA-02
 Color RAL 9005 - black	FA-03
 Color RAL 2011 - orange	FA-05
 Color similar to AGCO grey	FA-11
 Color similar to Fendt nature green	FA-09
 Color similar to MF red	FA-10
 Color similar to John Deere green	FA-07
Lower ball bush adapter cat. 3/2 (per piece)	70299032
Trailer hitch with bolt -screwed	ZM-01
K80 Ball coupling -screwed	K8-01
K50 Ball trailer hitch -screwed	K5-01
Adjustable top link cat.3 heavy	OL-01

## 😊 READY

Delivery FCA at factory Visselhövede (Transportcosts on request)